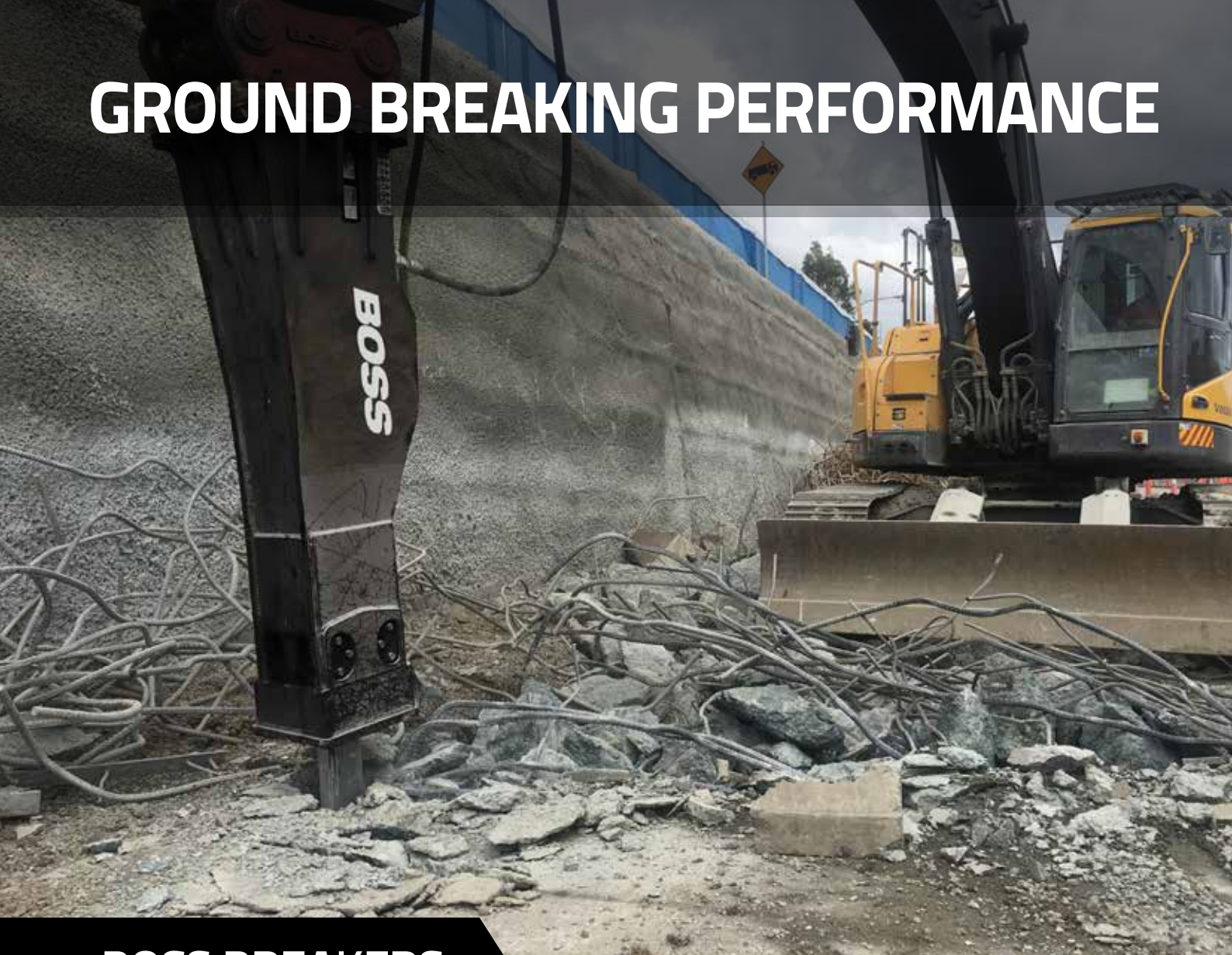


GROUND BREAKING PERFORMANCE



BOSS BREAKERS



SETTING THE STANDARD WITH
**UNBEATABLE
LEVELS OF
POWER,
PRECISION &
PROFITABILITY.**

Exclusive dealer for Australia, New Zealand & Pacific Islands

www.bossattachments.com.au

☎ 1300 116 661

BOSS
ATTACHMENTS



BOSS BREAKERS HIT HARDER LAST LONGER

Built to last and ready to handle the toughest challenges, these hydraulic breakers deliver heavyweight performance, and reduced operating costs, without any compromise to power and production.

A MUST FOR QUARRY, DEMOLITION, AND EARTHMOVING CONTRACTORS

- 2 YEAR WARRANTY
- Up to 40% less operating cost
- Extremely powerful and durable
- Anti blank fire feature
- Auto shut-off system
- Nitrogen fired operation
- Auto lube system available with some models
- Range of models to suit all excavator types
- Extensive tool bit option range

1 Energy Regeneration Nitrogen Gas Cushion Chamber (ERNGCC)

Absorbs the piston's upward recoil and conduct energy recycling for the constant blow .

2 Side Buffer

Side vibration absorber and side suspension device to protect the powercell.

3 Easy-Pass Valve

Side mounted type of 'Easy-Pass Valve (EPV)' as a spool to regulate smooth oil traffic and to control the oil direction for the stable operation and the vibration absorbing .

4 N2 Gas Charged Accumulator

Rechargeable N2 gas accumulator to assist power stroke and to reduce the surge pressure and the spikes from the hydraulic circuit of the excavator.

5 Piston

Most efficient design for maximum energy transfer and recoil reduction as well as ideal match of tool and piston diameters. It transfers highest shock wave into the breaking objects.

6 Efficient Power Transfer(Piston to tool)

Optimum transfer of blow energy into the material and the reduction of the recoil.

7 Dual Tool Retainer Pins

Correct tool alignment and dispersion of tool wear.

8 Housing Bottom Plate

Abrasion-resistant plate delivers breaker protection.

9 Working Tool

Heat treated and optimal length for efficient breaking.

10 Replaceable Tool Bushing

Convenience for replacement and protect the front head. (Not shown on the illustration)

11 Wearing Plates

Employment of wear resistant plates between cylinder, front head and housing increases the overall product durability.

20 Top Buffer

Vibration absorber to prevent the impulses between the carrier and the breaker.

19 Side(Tie) Rods

Fully closed side (tie) rods enlarges the durability and the optimal load carrying capacity is designed.

18 Base Buffer

Vibration absorber and suspension device to protect the powercell.

17 Cylinder Design

Square typed cylinder design brings optimum match between back head and front head as well as improves stable operation to increase the product durability and to reduce the unnecessary damages such as scratches.

16 All-in-One Type of Upper Bushing and Thrust Ring Integration

Convenient one set and easier maintenance and serviceability without disassembly of powercell.

15 Super Anti Blank Firing (SABF) System

SABF increases the lifespan of all components subject to wear and fatigue and reducing stress for the arm of the main carrier and the breaker. (Not shown on the illustration)

14 Underwater Application (UA)

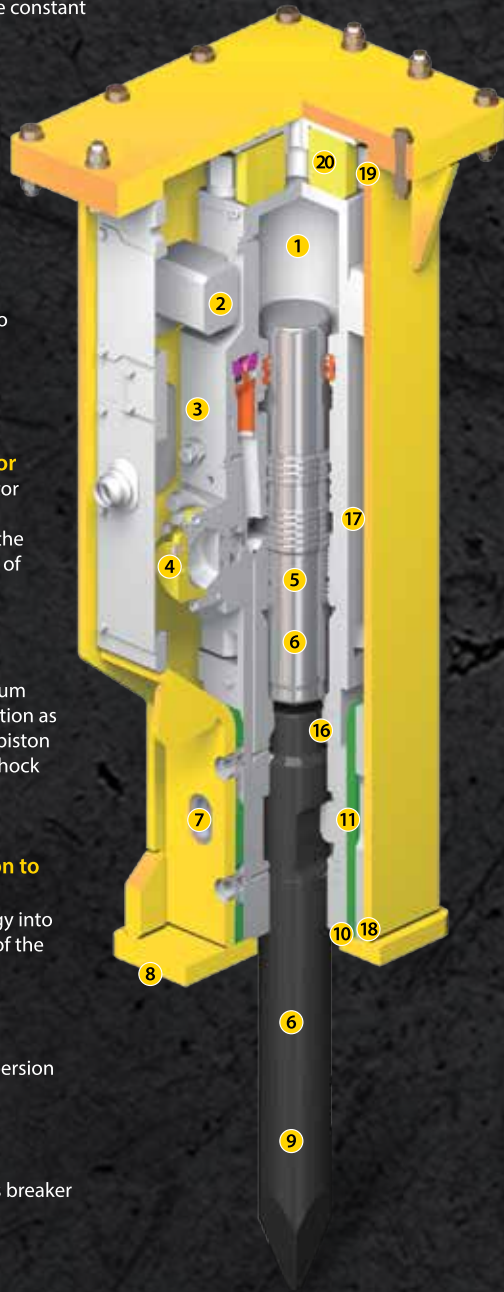
Air line for underwater use. (Not shown on the illustration)

13 Double Speed System (DSS)

As a standard feature (above SAGA120) to change from long stroke to short stroke according to the operator's requirement for the optimal performance. (Not shown on the illustration)

12 Auto Grease Refiller

Compact auto grease refiller is equipped as an optional feature. Easy daily refill is serviced and continuous greasing is available as long as the breaker is operated. (Not shown on the illustration)



※ Note : some features may be adjusted due to the drawing updates by the manufacturer.

BOSS BREAKER RANGE	SMALL			MEDIUM			LARGE			
		B0103S	B0206S	B0409S	B1116S	B1826S	B2835S	B4055S	B5070S	B7090S
EXCAVATOR CLASS	Tonnes	1 - 3t	2.5 - 6t	4.5 - 9t	11 - 16t	18 - 26t	28 - 35t	40 - 55t	50 - 70t	70 - 90t
WORKING WEIGHT (BOX)	kg	184	259	412	980	2,000	2,716	4,200	5,400	6,700
TOOL DIAMETER	mm	40	60	75	100	140	155	180	195	205
OIL FLOW	L/min	15 - 35	35 - 60	40 - 80	80 - 110	120 - 180	180 - 240	250 - 300	300 - 360	360 - 420
OPERATING PRESSURE	bar	90 - 120	90 - 130	95 - 130	140 - 160	160 - 180	160 - 180	160 - 180	160 - 180	160 - 180
IMPACT RATE	BPM	700 - 1500	400 - 1100	450 - 750	400 - 750	350 - 500	300 - 450	200 - 400	200 - 245	260 - 310
IMPACT FORCE	Joules	400	746	1,356	3,392	8,141	10,854	12,000	13,000	14,000

SUPER ANTI BLANK FIRING (SABF)

The operator can selectively adjust On & Off Modes of Anti Blank Firing function according to the given working condition.



Super Anti Blank Firing On

- In SABF On mode, the hammer automatically starts when the tool presses down the workpiece and automatically stops when the tool tip is no longer in contact with the material.
- The operator can efficiently control the hammer operation even in poor visibility such as underwater.

- Internal stress, especially on the tool-retaining components such as the tool pin, front head, side rod, is reduced, providing increased hammer lifespan.

Super Anti Blank Firing Off

- In SABF Off Mode, the operator can save time to position the breaker. This provides great productivity through increased efficiency of hammer operation.

WORKING TOOLS & RECOMMENDED APPLICATIONS



Moil

Universal usage
Concrete breaking
Rock breaking
Road construction



Chisel

Mining
Trenching
Ground work
Slope breaking



Blunt

Mining
Block holing
Secondary breaking
Slag removal



Moil (Long)

Universal usage
Concrete breaking
Rock breaking
Road construction



Dust Chisel

Mining
Trenching
Ground work
Slope breaking



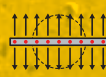
Slab Buster

Slab demolishing
Lower tool wear application



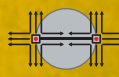
Cone

Universal usage
Soft & nonabrasive work



Asphalt Cutter

Frozen ground
Asphalt cutting



Tank Cutter

Container chopping
Special application for two tips' breaking

Exclusive dealer for Australia, New Zealand & Pacific Islands
SALES, SERVICE AND HIRE AUSTRALIA WIDE

☎ **1300 116 661**

sales@bossattachments.com.au www.bossattachments.com.au

